



# VALERUS VMS

## A Unified Platform for Controlling Video, Access Control, LPR, and Other Integrated Applications



### Overview

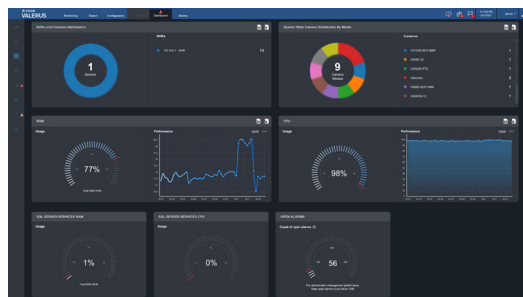
As the hub of your integrated security solutions, Valerus provides all the features you count on to make your job easier and more intuitive. Its sophisticated—yet simple and flexible interface—helps you monitor video, audio, alarms, access control, license plate recognition (LPR), and system health through a single unified UI. Plus, it exponentially reduces the time you spend on post-incident investigations, and allows you to deploy and maintain your surveillance infrastructure with ease.

Valerus software runs on a variety of platforms—from a small independent workstation, to a Vicon Application Server, to a large-scale virtual machine—to meet any customer application. Vicon’s new AI-based analytics can help you perform more meaningful forensic searches and reduce the occurrence of false motion-triggered alarms.



### Keep All Your Devices Working Optimally with Valerus Health Monitoring

Oversee the status of all your system components, and your network, in real-time. The Valerus health dashboards give you an at-a-glance summary of your infrastructure so you can quickly filter on issues and pinpoint concerns before they become critical.



### Benefits at-a-Glance



- ▶ The powerful VAX Action Plans are now available in Valerus
- ▶ AI filters allow for object-based recording and searching, significantly increasing operational efficiencies
- ▶ The free Desktop Client improves resource management and enhances performance, for the optimal Valerus experience
- ▶ Archive your video, audio, and data to a cloud drive, where it can be safely stored and seamlessly accessed, with longer retention times
- ▶ Virtual Matrix Display Control (VMDC) lets you control a large number of monitors, or a monitor wall, through a single interface, eliminating the need to manage each client individually

## Features That Make a Difference



### Seamless Integration with VAX Access Control

Monitor and respond to VAX notifications via the Valerus UI.

- See VAX alerts, door states, and door and access notifications from the Valerus alarm list and maps.
- Enable action plans and door overrides directly from the Valerus map.
- Integrate VAX events into the Valerus Alarms Management Suite.
- The integration also supports VAX I/O events; once the VAX system is added to Valerus, the VAX I/Os will be automatically added to the Valerus tree and map as resources.



### Third Party Integrations

Vicon hand selects innovative technology partners to integrate with Valerus, including such industry-leading brands as Software House, Halo, Sureview, Lenel, and Thermal Radar. These integrations enhance our existing product offerings and address the unique needs of our customers.



### True Standards-Based

Valerus is ONVIF-compliant, utilizing open SSL and REST API, and does not require expensive proprietary camera drivers.



### Windows Service

Valerus is based on a Windows Service that runs in the background. The browser-based platform requires a browser that supports Active X (currently IE 11 and Microsoft Edge); it will work on Google Chrome using the Valerus Chrome extension. Apps are available at the Apple and Google stores for mobile devices. An Internet Gateway allows for external connectivity.



### Optional Application-Based Client

For users who don't want to use a browser for the Valerus client, or just want an executable in Windows startup, a thick client is available.



### Quick Configuration

This streamlined configuration process lets the VMS discover and configure all devices on the network with just a few clicks, so the system will be up and running in minutes. The default settings can be adjusted at any time.



### Device Configuration

A devices web interface lets you configure system devices directly through the VMS.



### Import Users

Valerus can connect to an Active Directory server, eliminating the need to set up individual users; the user information is collected directly from the corporate network. Additionally, you can compile a list of users offline, then import those users via a csv file.



### Device Reports

Easily generate and export reports (HTML or Excel) of all devices on the network, sorted by their host Recording Server.



### Single Point of Management/Central Software Upgrade

The entire system is centrally managed from the Application Server. All configuration (including user management), alarm handling, system-wide authorizations, upgrades, and licensing are performed from a single unit. New Valerus versions can be uploaded to the Application Server and remotely pushed to the Recording Servers.



### User Roles and Authorization

You can configure unique roles, each with its own privileges and resource authorization. Valerus ships with four default roles: Admin, Supervisor, Investigator, and Operator, and you can create new roles as needed.



### Export

Export video to any mapped storage media, including the cloud, in MP4 format. All exported files are digitally signed using the system's SSL certificate, and can be authenticated during playback.



### 360° Lens Dewarp

Digital dewarping of the fisheye image is available in live video and playback.



### Support for H.265 Compression

H.265 compression reduces storage and bandwidth requirements.



### Remote Storage and Auto Archiving

Valerus can map directly to, and store video, on remote devices, including a NAS device, someone else's computer, another server, a data center, or the cloud. And you can choose to archive whenever, wherever, and however you prefer (for example, event-based or on a schedule).



### Alarms

A dedicated Alarm tab displays all active alarms, in real-time, along with details pertinent to each alarm. Each alarm is accompanied by an audible and visual indicator, which can be turned on/off by the user, configured to time out, or be manually acknowledged.



### Alarm Management

Valerus lets you define which events are elevated to alarm status, what outputs should be triggered in the event of an alarm, create an alarm lifecycle, and determine—step-by-step—what users should do when the alarm occurs.



### Bookmarks

Create a text bookmark (e.g., case notes) related to a video clip. This bookmark is accessible during playback, and is searchable in a query.



### Alarm/Event Search

Search for specific types of events for more meaningful search results, e.g., events with people and/or vehicles, and reduce the amount of non-relevant video you watch.



### Museum Search

Search for object-based motion in an area and receive a list of instances of people and/or vehicles within that area.



### Thumbnail Search

Thumbnail renderings of video help you search for specific incidents or a specific timeframe in your timeline.



### Advanced LPR and VAX Search Filters

In instances where you may know only part of the data you're searching for, you can specify the "Contains" criteria in your search query (in other words just the info you know, even though it's incomplete). This will limit the results to only records containing that partial data.



### Privacy Masks

Block sensitive areas in the camera's field of view via software. An "unmask" feature can temporarily remove the privacy mask; the mask can also be removed on exported video.



### Interactive Maps

Create and import static or live geographical maps and overlay interactive icons for camera, VAX, I/O, LPR and other resources directly onto it. Multiple maps can be linked to support multi-level drill-down.



### Audit Log

Track users' actions in the system to ensure optimal usage. Track by user, PC, date/time, and specific action, then export those reports in excel or HTML.



### Mobile App

The free Valerus smartphone app lets you view live and recorded video on your Apple or Android smartphone or tablet. Mobile devices are listed in the Valerus resource tree, and if you're logged into Valerus you can get web push notifications on your device.



### Clean, Optimized User Interface

Easy-to-use tabs let you access forensic searches, configuration features, health dashboards, alarm panel, live monitoring, and VAX Access Control. Choose from multiple display options and create multiple views. All system resources are displayed according to hierarchy or user group, and the resource list can also include frequently visited websites.



### Support for Keyboard and PLC Controls

Vicon keyboards and PLC controllers connect through a serial or IP connection for camera control, video switching, and controlling remote client monitors.



### Application Server Redundancy

In the event the primary Application Server fails, an optional secondary server will automatically intercede.



### Backup and Restore System Settings

Application Server and Recording Server settings are backed up regularly and can be automatically restored in the event of a failed server, eliminating the need to reconfigure the unit.



### Access List

As an added security/network management measure, you can create a list that restricts or grants user access to Valerus.



### Customizable Rules and Events

You can set up rules that will automatically trigger responses to a variety of events, including external 3rd party events. Additionally, the powerful VAX action plans can be triggered in Valerus.



### Network and Security

Valerus is compatible with these protocols: IPv4/IPv6, TCP/IP, HTTP, HTTPS, RTSP, RTP, DHCP, UDP and ARP. Valerus provides HTTP, HTTPS encrypted data transmission, SSL and password protection for security. A user can be set to a complex password that can be enforced.



### Recording Server Failover

A dedicated server, or clusters of servers, can be configured as backup server(s). This ensures uninterrupted recording in the event that one or more Recording Servers fail.



### ViconNet Gateway

This module allows existing ViconNet users to seamlessly upgrade to Valerus.



### Client Monitoring Service

The main toolbar can indicate system performance and the current load level on the system; this can help you know if too many devices are being displayed.



### Log Collection

Retrieve system logs from all Valerus workstations without the need for a special tool.

## Order Your Valerus Software Pre-installed on a Server

We offer our powerful VMS functionality in a variety of server offerings that scale in performance to best match your requirements. These servers are bundled with the Windows® OS and Valerus software, all pre-installed, pre-tested, and certified for plug-and-play operation out of the box.

**Recording Servers:** Communicate, stream, and record video and audio from the edge devices.

**Application Servers:** Centrally manage the system, run the web server, and service the web clients.

**Client Workstations:** Run the Valerus VMS in a web browser for a powerful user interface.

Learn more about Vicon's server lineup [here](#).



## System Requirements for Valerus VMS

For customers who prefer to deploy the software on their own COTS hardware platform, Valerus VMS requires a dedicated server or virtual machine. These specifications are recommended for the Operating System and VMS application.

Feature	Details
Operating System	Servers: Microsoft® Windows® 10, 64-bit Windows Server 2016, 2019 and 2022 Workstation: Additionally supports Windows 11 and Windows 7 (for browser-based client PC only)
CPU	Intel® 7700 i7 processor
Memory	16 GB
Graphics	256 MB RAM onboard
Network Interface	1000 Mbps
Disk Space	5 GB min for installation; 75 GB min for recording
Minimum Desktop Client Requirements:	i3 Machine: 8 GB RAM; CPU: 3.60 GHz. Graphics: Intel® UHD Graphics 630. Processor: Intel Core™ i3 10100 CPU @3.60 GHz. OS: Windows 10, 11. Version: 10.0.19041 Build 19041.
Browser	Must have Microsoft Edge which provides IE 11 services (must support Active X); Chrome can be used with the Valerus Chrome extension available (free) at the Chrome store
Performance*	Recording Server with standard internal storage: Up to 200 Mbits or up to 70 cameras Recording Server with internal RAID: Up to 300 Mbits or up to 100 cameras <small>*Both the bandwidth and the number of cameras should be taken into consideration. For exact numbers, refer to the Valerus storage calculator.</small>

## Valerus License Model Numbers

Each edge device requires just one Valerus license, regardless of how many channels that edge device provides. To choose the Valerus offering that's right for you—PRO or ENTERPRISE—refer to the [Valerus Tier Chart](#), which outlines what features are available with which offering.

Edge Device	Valerus PRO	Valerus ENTERPRISE
Vicon device	VLR-VPRO-LIC	VLR-VENT-LIC
Third Party device	VLR-PRO-LIC	VLR-ENT-LIC

**Check Out the Valerus TRY Version!**  
Vicon offers a free trial version of Valerus software that includes fully functioning demos so you can try before you buy.

Data Sheet Number: V281-23-04

Vicon Data Sheet Number: 8009-7281-23-04

Specifications subject to change without notice.

Vicon and their logos are registered trademarks of Vicon Industries Inc.

Copyright © 2024 Vicon Industries Inc. All rights reserved.

Explorer is a registered trademark of Microsoft Corporation.

Chrome is a registered trademark of Google LLC.