
PRONTO Device Manager (Discovery Tool)

XX327-00-01

Vicon Industries Inc. does not warrant that the functions contained in this equipment will meet your requirements or that the operation will be entirely error free or perform precisely as described in the documentation. This system has not been designed to be used in life-critical situations and must not be used for this purpose.

Document Number: 8009-8327-00-01 Rev: 8/23
Product specifications subject to change without notice
Copyright © 2023 Vicon Industries Inc. All rights reserved.

Vicon Industries Inc.

Tel: 631-952-2288) Fax: 631-951-2288

Toll Free: 800-645-9116

24-Hour Technical Support: 800-34-VICON
(800-348-4266)

UK: 44/(0) 1489-566300

www.vicon-security.com

Table of Contents

Table of Contents	2
Introduction	3
Features and Functionality	3
Starting the Application.....	3
Auto Device Discovery	3
Cross Subnet Discovery (IP Search)	3
Filtering the Devices.....	4
Refresh the Device List	4
Device Access Credentials.....	4
Setting Credentials	4
Editing Credentials	5
Device Properties	5
Bulk Selection for Device Properties.....	6
Network Settings.....	6
Bulk Selection for Network Settings	7
Firmware	7
Bulk Selection for Firmware	8
Firmware Library Update	9
CSV Export	10
Help File.....	10

Introduction

PRONTO is Vicon's device manager tool that can be used to discover all Vicon cameras on a system. Using this standalone single discovery tool allows users to:

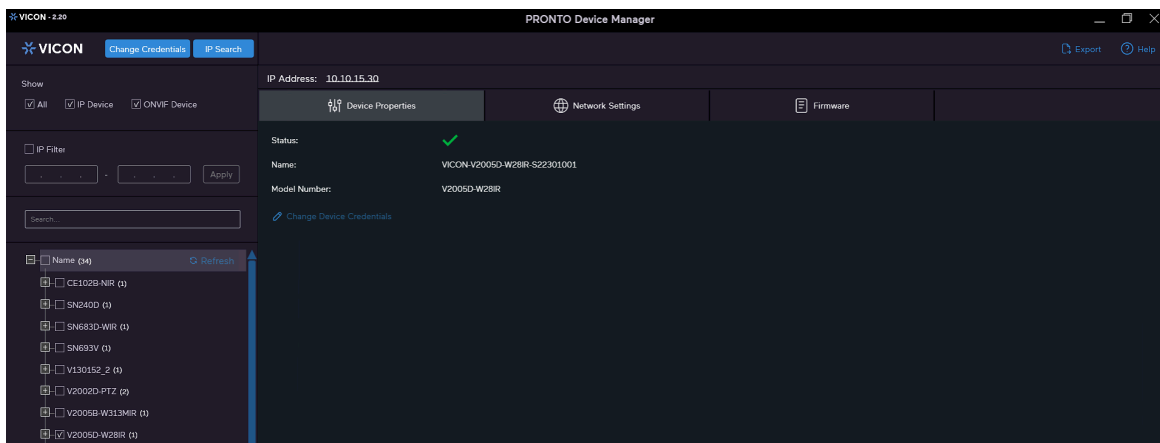
- Discover cameras
- Set up IP addresses: DHCP, manual, batch
- Configure initial passwords
- Launch camera web interface
- Upgrade firmware, single and batch, based on firmware file or device type
- Generate reports for all currently connected cameras, legacy Vicon cameras and other connected ONVIF devices

Features and Functionality

Starting the Application

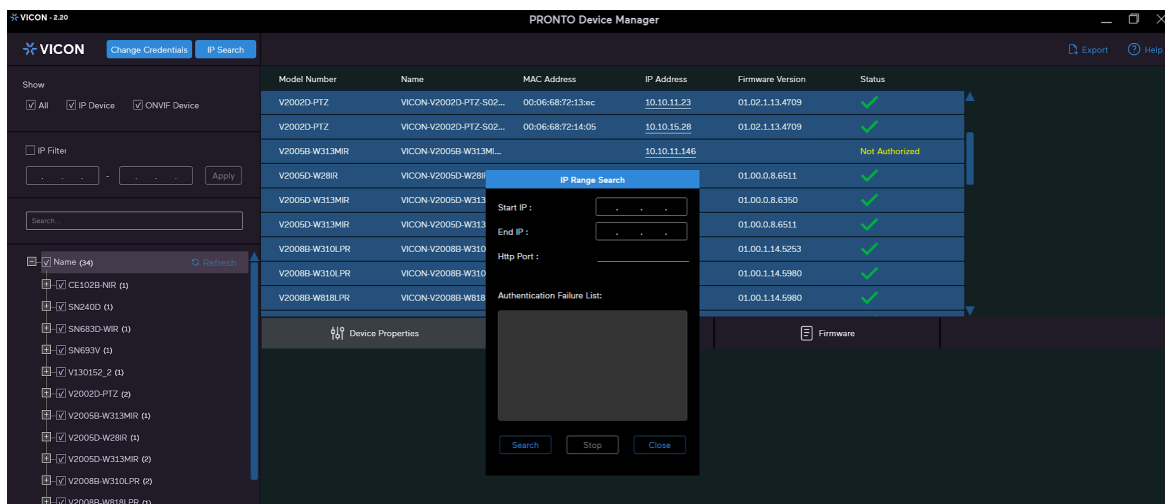
Auto Device Discovery

Upon startup of the PRONTO Device Manager, the tool's auto-discovery function generates a list of the discovered cameras on the network in a resource list hierarchy on the left side of the opening display page. Note: While the tool will discover third party ONVIF devices, advanced functions such as firmware upgrades are not supported. Above that list there are a variety of filtering options. On the right side of the page are tabs for Device Properties, Network Settings and Firmware. Each of these tabs will be explained individually in this manual.



Cross Subnet Discovery (IP Search)

Additionally, the PRONTO tool supports efficient and secure camera discovery in different subnets. This allows users to search for cameras in separate network segments within specified IP ranges.



Clicking the IP Search button opens a dialog box. The user simply defines the IP range (Start IP/End IP) for the camera search; click Search and a list of cameras displays. From this list, the desired cameras can be selected, and they are added to the list of discovered cameras. If the camera to be added displays quickly, click Stop to pause the search. Click Close when the search is complete.

Filtering the Devices

For some systems, the discovered camera list can be very long. Finding a specific device is made easier by using the filtering and search options provided on the display panel. This allows users to:

- Filter by "All Devices," "IP Device," or "ONVIF Device"
- Filter by IP range
- Filter by text (Search)

Check the box next to the desired filtering method (more than one can be selected); different cameras will display in the resource list depending on the filter selected. Vicon cameras can display under IP cameras and/or ONVIF Device. If IP Filter is selected, enter the IP of the camera in the fields and click Apply.

Refresh the Device List

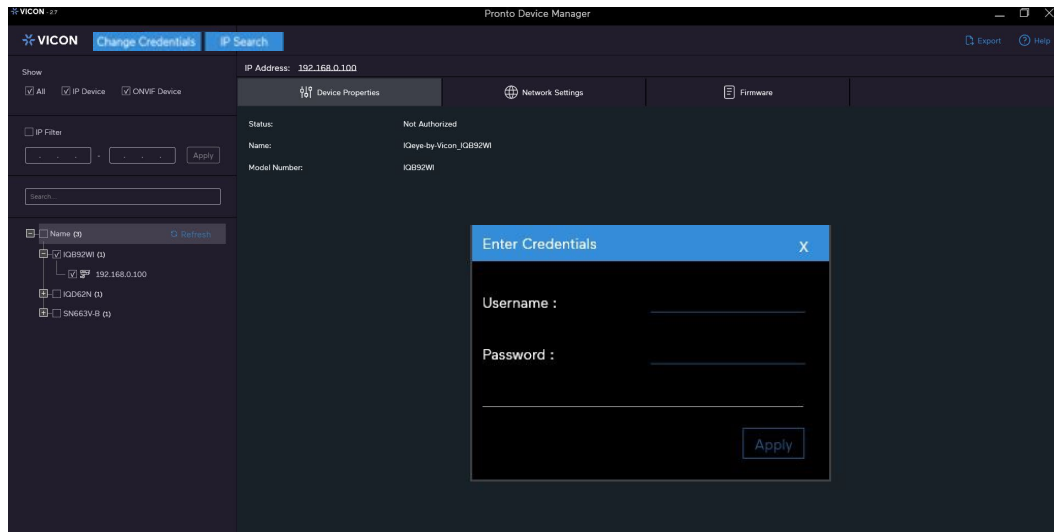
A "Refresh" button is available above the resource list on the page, which allows users to rediscover the devices in the network. Note that if a filter is applied, the refreshed list reflects the filter selected.



Device Access Credentials

Setting Credentials

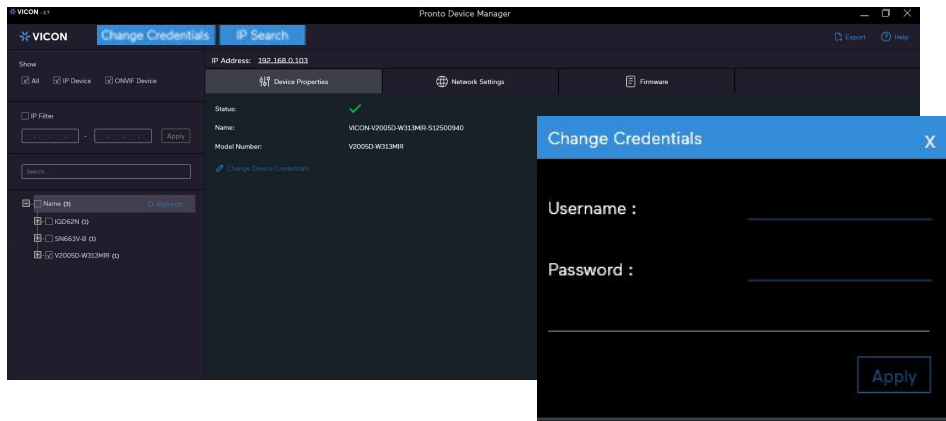
Credentials for each camera are used by PRONTO for accessing and authorizing cameras. Users can set and change login credentials, which are then used by the system to communicate with each camera. It is important to ensure that the correct credentials are set in the system, since these credentials allow the system to authorize the connected camera(s), and authorization is necessary to gather certain information and commands for the camera. The credentials are set individually for each camera; the default is the login for the camera. This can be changed so that they are the same for every camera if necessary. See the section below for Editing Credentials. The system only recognizes one set of credentials at a time; all other devices will be noted as Not Authorized.



Click Enter Credentials. Enter the Username and Password in the popup display screen. Click Apply.

Editing Credentials

There may be some instances when it is necessary to update the credentials used to authorize the camera. After the credentials are set, the button becomes Change Credentials. To edit the credentials, click that button and enter the new credentials in the popup display screen. Click Apply. Note that this does not change the camera credentials but only the credentials the PRONTO tool uses to access the camera information and commands when necessary.



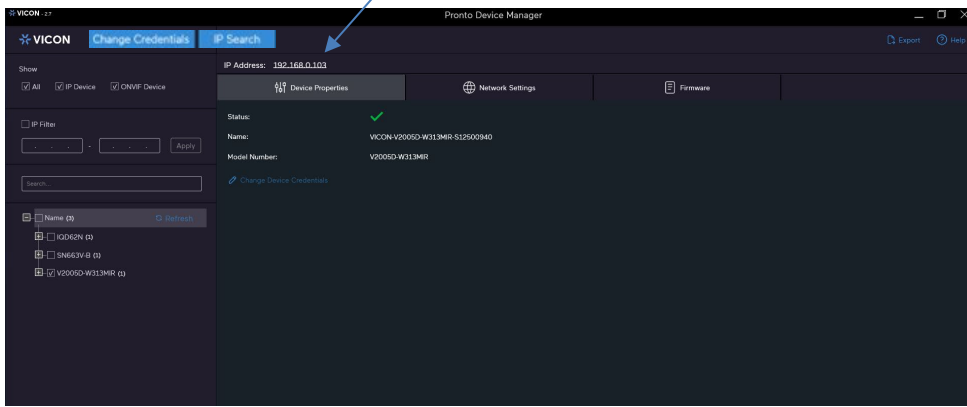
Note that the “Change Credentials” option is only shown if the camera is already authorized with provided credentials and is only used to change existing credentials of the selected device.

Device Properties

The simplest way to see a camera’s device properties is to select it from the resource list (check box next to the camera name) and click the Device Properties tab on the right side of the screen (that is the default view when the tool opens). If the device is authorized, it is noted on that screen with a green check on Status and all the information and options are displayed. If the device is not authorized, limited information displays. Follow the instructions above to set the credentials to authorize if needed.

The IP address shown with the underline indicates a hyperlink that opens the native camera page. Clicking it will open the IP address in a browser window.

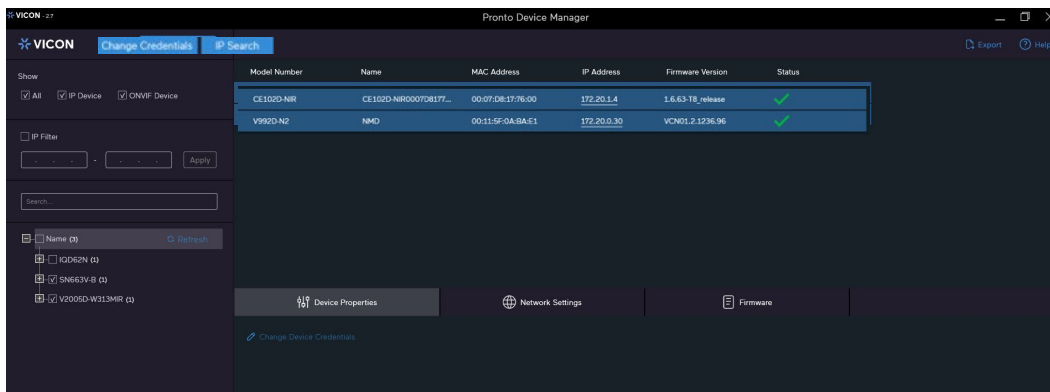
6 Vicon PRONTO Device Manager



Status: Not Authorized

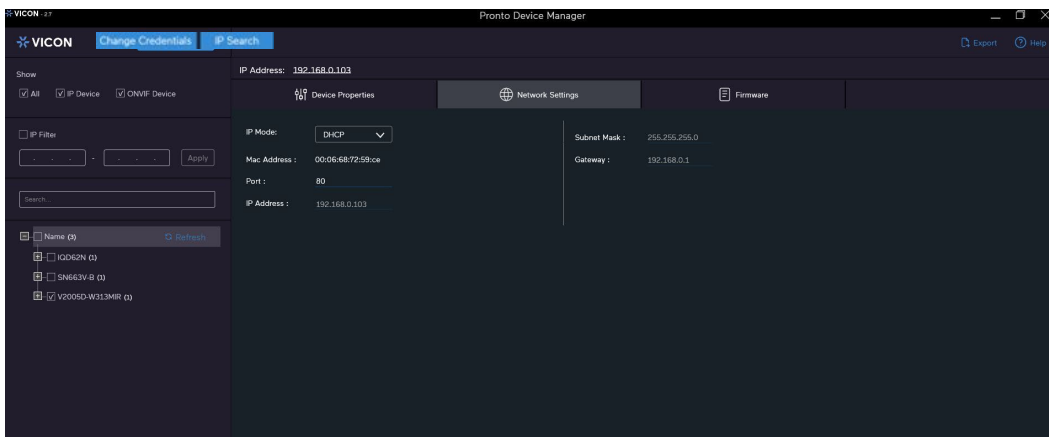
Bulk Selection for Device Properties

To change the device credentials for multiple cameras, use the Bulk Selection functionality that the PRONTO tool provides. Select multiple devices in the resource list. The selected devices are shown at the top right of the screen. Under that, similar tabs of "Device Properties," "Network Setting," and "Firmware" display. Select "Device Properties" and make any changes required. These changes will occur on all devices selected.



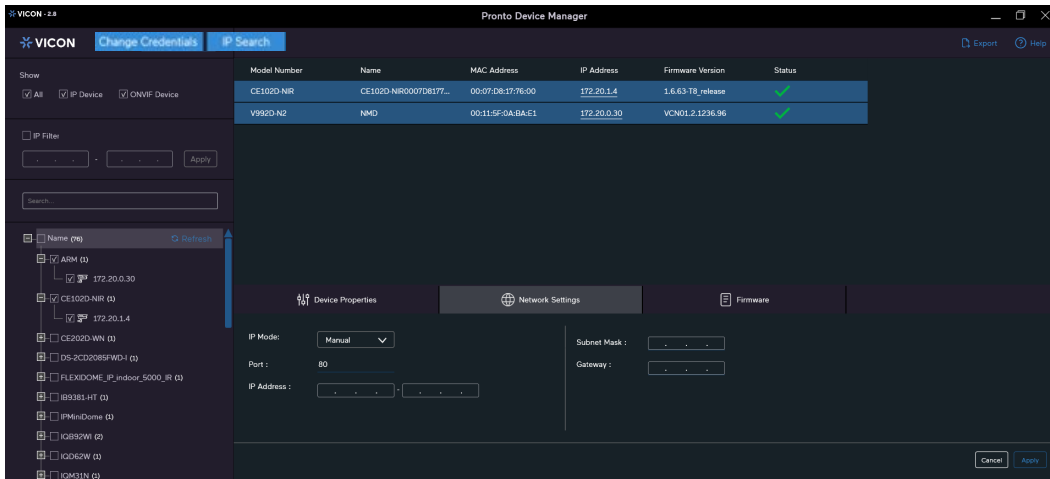
Network Settings

The next tab on the right side of the screen is Network Settings. This section allows the selection of the IP Mode (DHCP/Manual) and provides the Mac address and port number. From here, the IP address, Subnet mask and Gateway details can be edited if required.



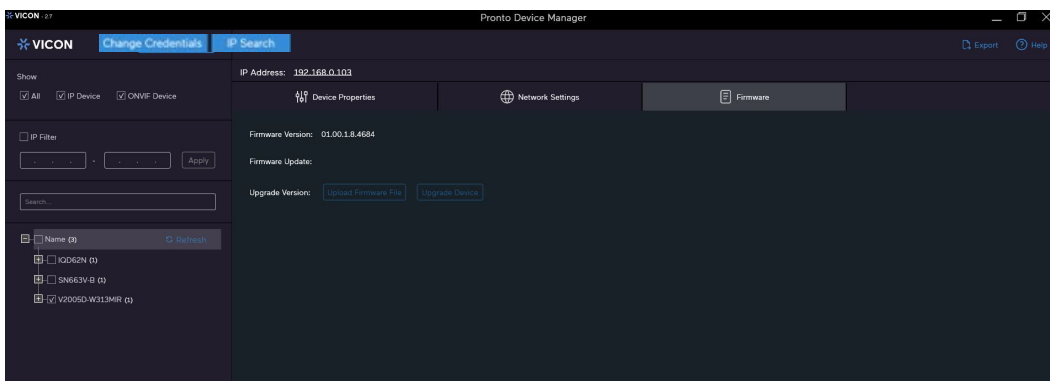
Bulk Selection for Network Settings

To change the network settings for multiple cameras, use the Bulk Selection functionality that the PRONTO tool provides. Select multiple devices in the resource list. The selected devices are shown at the top right of the screen. Under that, similar tabs of "Device Properties," "Network Setting," and "Firmware" display. Select "Network Settings" and make any changes required. These changes will occur on all devices selected.

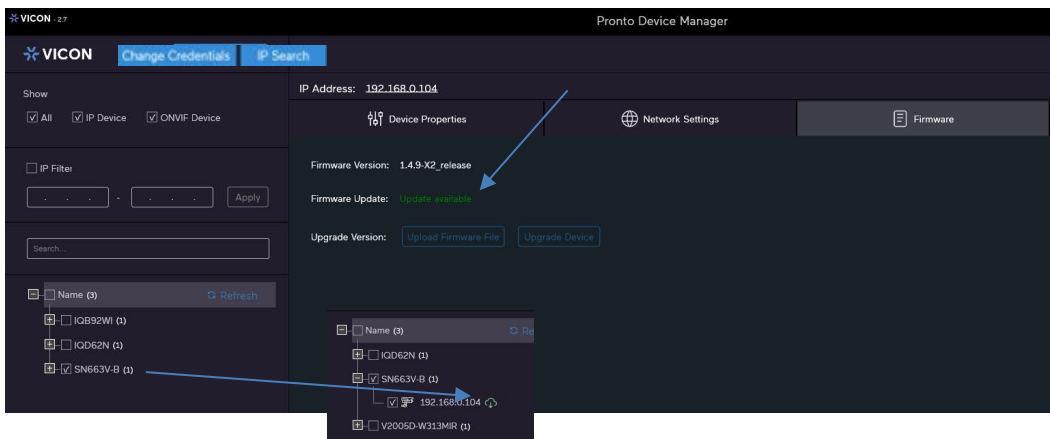


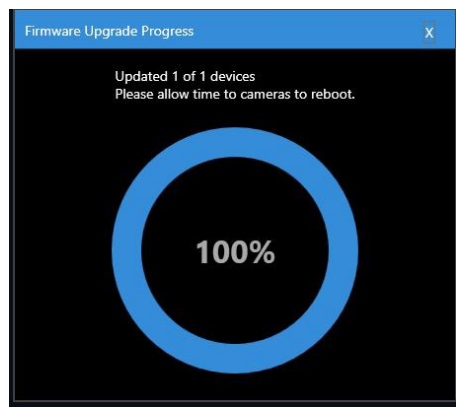
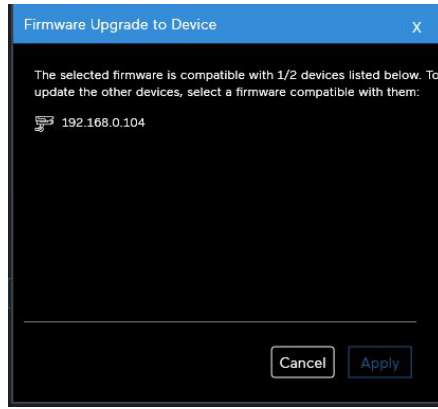
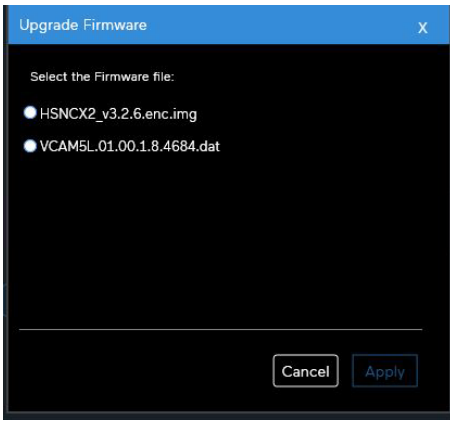
Firmware

The third tab on the screen is Firmware, which provides information about the firmware that is currently installed on the selected camera.

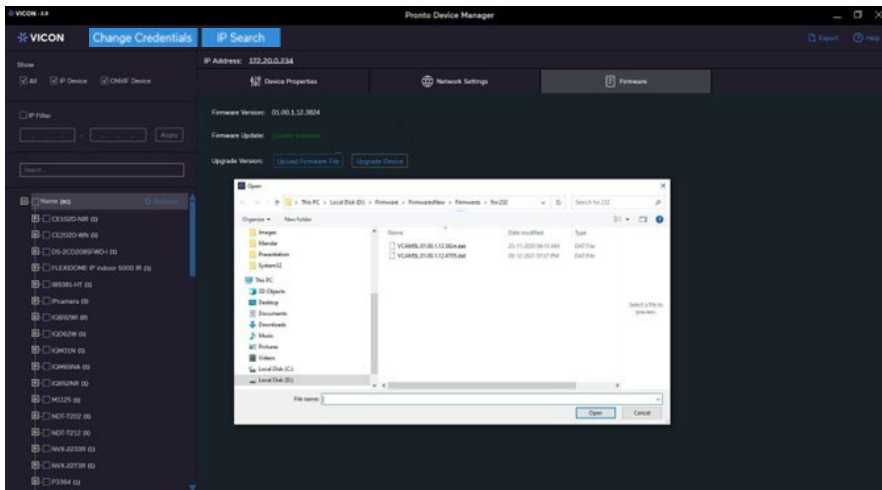


Select a device and then select Upgrade Device to start the firmware update process. The tool recognizes the firmware currently on the device and, if an updated firmware is in the firmware library for the selected device(s), the tool indicates that an updated firmware is available both on the screen and in the resource list (see graphic below); if that firmware is applicable for other devices as well, that is indicated in the resource list. To install the firmware, from the Firmware tab, click Upgrade Device; click Apply and this latest firmware will be installed.



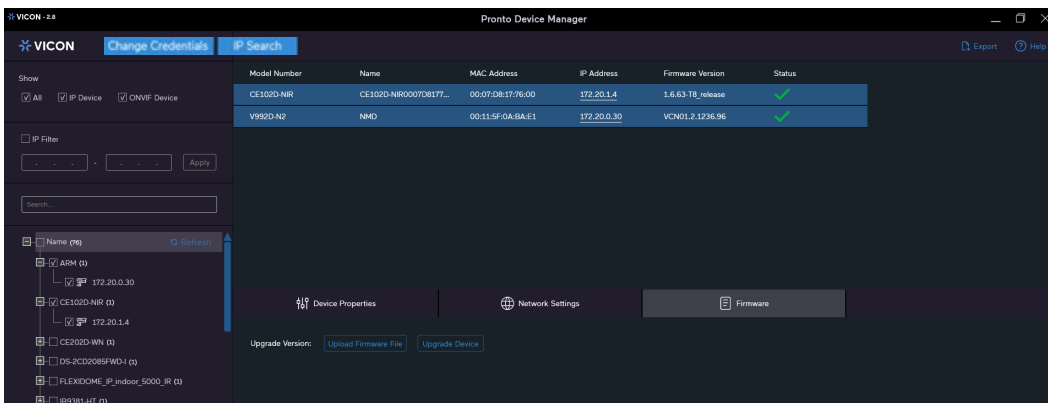


Additionally, from this screen the user can upload and install new firmware into the tool’s firmware library. The Upload Firmware File allows the user to add a firmware file into the existing library. To add firmware, click the Upgrade Firmware File button. A dialog box opens; go to the location of the firmware. Select the firmware to add and click Open. Once uploaded, it is available in the library to update all relevant cameras.



Bulk Selection for Firmware

To change the firmware for multiple cameras, use the Bulk Selection functionality that the PRONTO tool provides. Select multiple devices in the resource list. The selected devices are shown at the top right of the screen. Under that, similar tabs of “Device Properties,” “Network Setting,” and “Firmware” display. Select “Firmware” and make any changes required. These changes will occur on all devices selected.



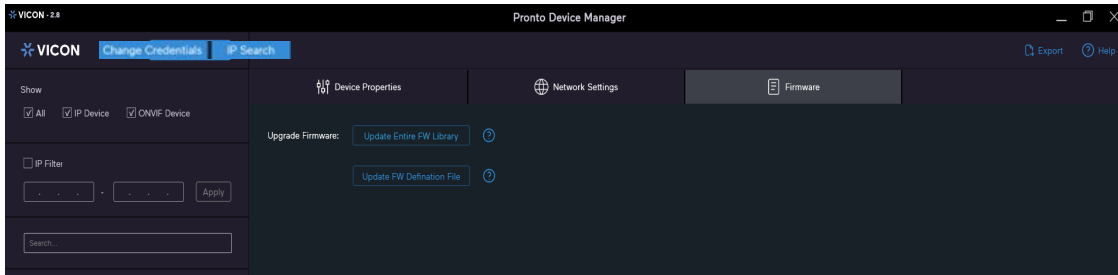
Selecting a Single Device in Bulk Selection

To select and see the properties of an individual camera in a bulk selection just select that camera from the bulk list.

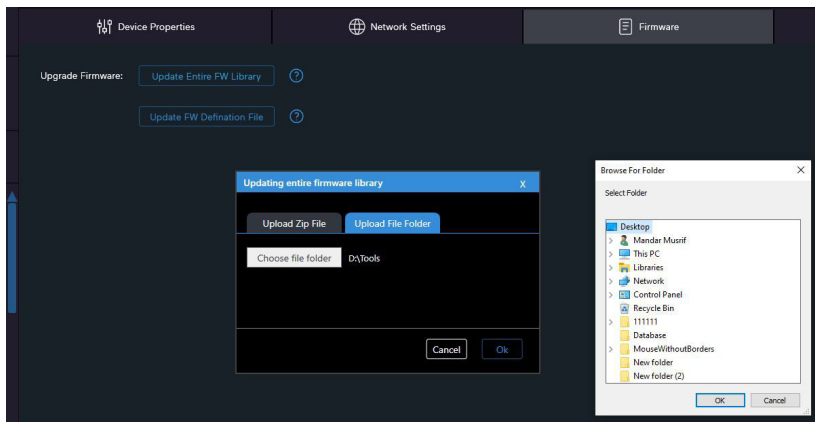
Firmware Library Update

A Firmware Library is part of the PRONTO tool. Firmware can be added to this library as needed by an individual user; the procedure is explained in the previous section. A complete updated Firmware Library will be available on Vicon's website when there have been updates to it; there will also be a Firmware Definition file available that lists the current firmware for Vicon cameras. Download these files to your system.

To update the entire firmware library on your system, go to the Firmware page. Make sure no cameras are checked in the resource list; the Update Entire FW Library and Update FW Definition File buttons display. Click to upload them to the system.

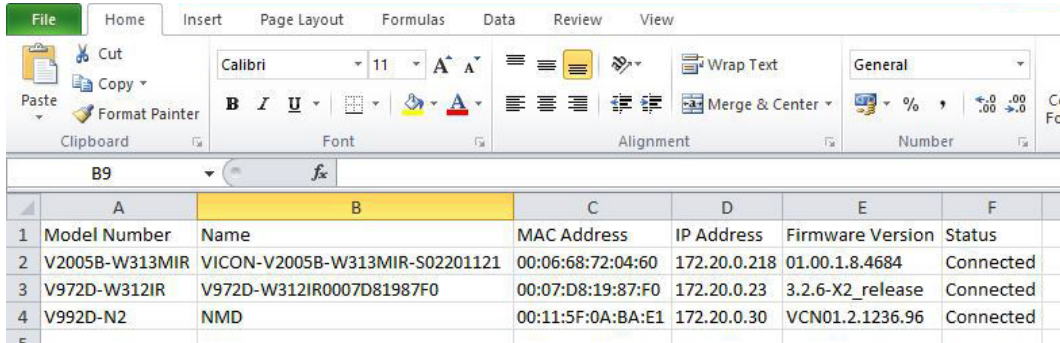


An option displays to select the folder with the firmware library or a zipped firmware library folder; both options will update/replace the library files in the system; the old library is backed up in the Installation folder so it can be manually restored if the need arises. Note that these files should be used to upload the entire library and not to upload one or a few files; if that is done then only those new files will be in the library.



CSV Export

All discovered devices listed in the tool can be exported into a CSV file if needed. Check the camera(s) that a report is needed for. If devices have different passwords, additional reports can be run with all sets of valid credentials in order to get the most complete data. Click the Export button in the top right corner of the screen (next to Help) to generate a report.



	A	B	C	D	E	F
1	Model Number	Name	MAC Address	IP Address	Firmware Version	Status
2	V2005B-W313MIR	VICON-V2005B-W313MIR-S02201121	00:06:68:72:04:60	172.20.0.218	01.00.1.8.4684	Connected
3	V972D-W312IR	V972D-W312IR0007D81987F0	00:07:D8:19:87:F0	172.20.0.23	3.2.6-X2_release	Connected
4	V992D-N2	NMD	00:11:5F:0A:BA:E1	172.20.0.30	VCN01.2.1236.96	Connected

Help File

There is a Help button in the top right corner of the screen (next to Export). Click Export to download a copy of this document.



VICON INDUSTRIES INC.

For office locations, visit the website: vicon-security.com

